



**STALLION**

# **SOLAR LIGHTING TOWER**



**STL4W-S**

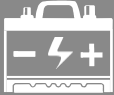
**LIGHTING TOWER OF  
YOUR CHOICE  
NEVER BE IN THE DARK**

# STL4W-S




GEL BATTERY  
ENERGY STORAGE BATTERY

200Ah  
X4




SOLAR PANEL  
GREEN ENERGY

380W  
X5




RUNTIME

24  
HOURS



LUMEN

16,000 Lm  
X4




OPERATION

IN EXTREME  
ENVIRONMENT



STANDARD  
FEATURE

Manual  
vertical  
mast




LAMP DURABILITY /  
LIFE EXPECTANCY

LED  
50,000  
Hrs



LIGHT COVERAGE

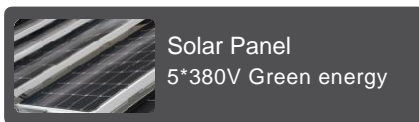
1464 m<sup>2</sup>  
Illumination  
Coverage



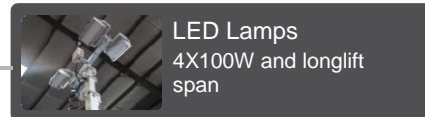
# SOLAR LIGHTHOUSE

## FEATURES

- Sunshine as fuel, cost-free running.
- Environmentally friendly, zero emission.
- Zero operation and maintenance cost.
- unfoldable solar panel and extendable outrigger makes deployment easy in any condition.
- Mains power and gasoline generator connection port is available.
- strong trailer system to make movement easier.
- 7.5m high mast and 400W LED lamp produce around 3000sqm lighting area.



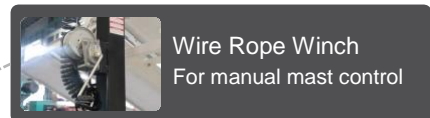
Solar Panel  
5\*380V Green energy



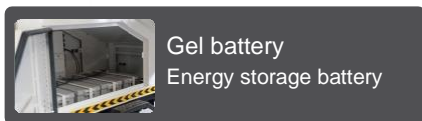
LED Lamps  
4X100W and longlift span



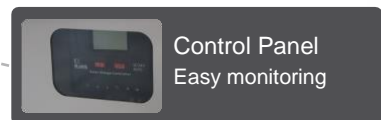
Fire Extinguisher



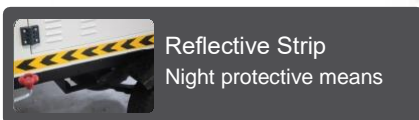
Wire Rope Winch  
For manual mast control



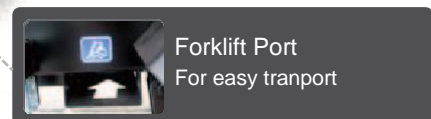
Gel battery  
Energy storage battery



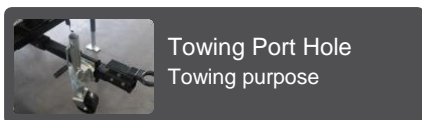
Control Panel  
Easy monitoring



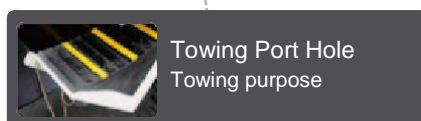
Reflective Strip  
Night protective means



Forklift Port  
For easy tranport



Towing Port Hole  
Towing purpose



Towing Port Hole  
Towing purpose

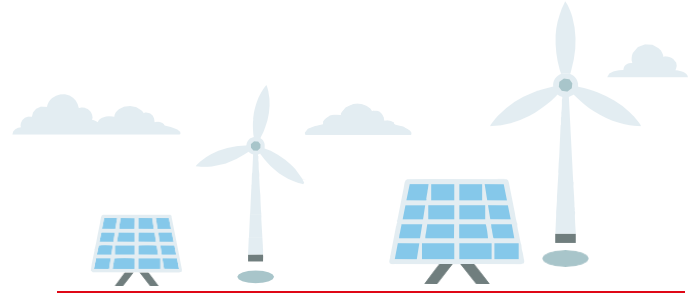




# Solar Lighting Tower specification

## Loading Capacity

40'HQ container 8 units



## STL4W-S

### Lighting Tower specification

Illumination Coverage (m <sup>2</sup> )	5Lux 1464 m <sup>2</sup>
Lamp Type	LED
Mast	Vertical Manual Type
Special Feature	Weather Proof Enclosure
Lighting time (Full capacity)	24h
Max towing Speed	60km/h

### Solar Panel

Maximum Power (P <sub>max</sub> )	5×380W
Maximum Power Voltage (V <sub>mp</sub> )	36V
Extending type	Manual operation
Extending area	9.7m <sup>2</sup>
Dimension	5*1956×992×40 (mm)

### Battery Bank

Type	Gel storage battery
Model	4× (200AH 12V)
Charging time	12h~14h
Design life	10 years

### Lighting

Type	LED
Power	4×100W
Input Voltage	DC18V~DC28V
Light Beam Angle	75°
LED Luminous flux	4×16000Lm
Protection class	IP66

### Mast

Type	Vertical Manual
Rotation Angle	359°
Max.Height	7.5m

### Weight and Dimension

Pack Dimension (L/W/H)	2700*1250*2500 (mm)
Outside Dimension (L/W/H)	3300*5000*7500 (mm)
Weight	1000kg

 الشركة العربية للمعدات المحدودة  
**Arab Equipment Company Ltd.**

King Fahad Road, Al Qashlah, Rakah

P.O Box # 1660, Dammam - 31441 Saudi Arabia

**Tel:** +966 (13) 857 3559

**Fax:** +966 (13) 857 0463

**Email:** info@aec-ltd.com  
sales@aec-ltd.com

**Jubail - Saudi Arabia**

**Tel/Fax:** +966 (13) 362 0155 **Mob:**+966 50 483 2057

**Email:** jubail@aec-ltd.com

**Riyadh - Saudi Arabia**

**Mobile:** +966 50 681 4540

**Email:** riyadh@aec-ltd.com

شركة اتحاد الخليج للتجارة المحدودة  
**United Gulf Trading Company Ltd.**



**Jeddah - Saudi Arabia**

**Mobile:** +966 50 381 9916

**Email:** jeddah@aec-ltd.com



[www.aec-ltd.com](http://www.aec-ltd.com)